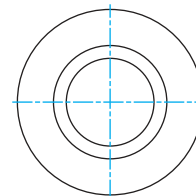
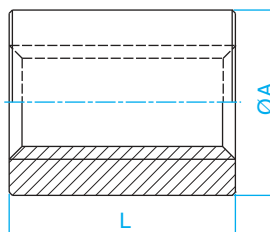
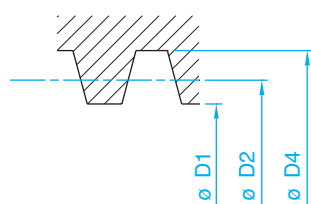


Type LRM



Collerette ronde  
Trapézoïdal suivant ISO 2901/2903 et DIN103

**Ecrou - Bronze CuSn7ZnPb - tolérance 7H**

Référence Type	Pas - Hand		Dimensions - mm		Taraudage tolérance 7H - mm					Surface de contact Contact sur- face	Poids Weight
	Droite Right	Gauche Left	ØA	L	D1		D2		D4		
					maxi	mini	maxi	mini		mini	mm / 300 mm
LRM 8x1,5	*		18	16	6,690	6,5	7,474	7,25	8,3	150	0,029
LRM 10x2	*	*	22	20	8,236	8,0	9,250	9,00	10,5	225	0,053
LRM 10x3	*	*	22	20	7,315	7,0	8,800	8,50	10,5	219	0,053
LRM 12x3	*	*	26	24	9,315	9,0	10,500	10,50	12,5	325	0,083
LRM 14x3	*	*	30	28	11,315	11,0	12,800	12,50	14,5	451	0,135
LRM 14x4	*	*	30	28	10,375	10,0	12,355	12,00	14,5	441	0,135
LRM 16x4	*	*	36	32	12,375	12,0	14,355	14,00	16,5	587	0,232
LRM 18x4	*	*	40	36	14,375	14,0	16,355	16,00	18,5	755	0,320
LRM 20x4	*	*	45	40	16,375	16,0	18,355	18,00	20,5	943	0,455
LRM 22x5	*	*	45	44	17,450	17,0	19,900	19,50	22,5	1 139	0,480
LRM 24x5	*	*	50	48	19,450	19,0	21,900	21,50	24,5	1 370	0,656
LRM 26x5	*	*	50	52	21,450	21,0	23,900	23,50	26,5	1 622	0,670
LRM 28x5	*	*	60	56	23,450	23,0	25,900	25,50	28,5	1 895	1,150
LRM 30x6	*	*	60	60	24,500	24,0	27,450	27,00	31,0	2 178	1,140
LRM 32x6	*	*	60	64	26,500	26,0	29,450	29,00	33,0	2 495	1,117
LRM 36x6	*	*	75	72	30,500	30,0	33,450	33,00	37,0	3 194	2,189
LRM 40x7	*	*	80	80	33,700	33,0	36,950	41,00	41,0	3 984	2,725
LRM 44x7	*	*	80	88	37,700	37,0	40,965	40,50	45,0	4 862	2,815
LRM 50x8	*	*	80	100	42,630	42,0	46,530	46,00	51,0	6 262	4,014
LRM 60x9	*	*	100	120	51,630	51,0	56,03	55,50	61,0	9 120	5,150
LRM 70x10	*	*	110	140	60,710	60,0	65,560	65,00	71,0	12 537	7,805
LRM 80x10	*	*	120	160	70,710	70,0	75,560	75,00	81,0	16 530	9,800
<b>DOUBLE FILETS</b>											
LRM 10x4	*		22	20	8,236	8,0	9,280	9,00	10,5	225	0,053
LRM 12x6	*		26	24	9,315	9,0	10,836	15,50	12,5	325	0,083
LRM 14x6	*		30	28	11,315	11,0	12,836	12,50	14,5	451	0,135
LRM 16x8	*		36	32	12,375	12,0	14,398	14,00	14,5	587	0,232
LRM 18x8	*		40	36	14,375	14,0	16,398	16,00	18,5	755	0,320
LRM 20x8	*		45	40	16,375	16,0	18,398	18,00	20,5	943	0,455
LRM 22x10	*		45	44	17,450	17,0	19,948	19,50	22,5	1 139	0,480
LRM 24x10	*		50	48	19,450	19,0	21,948	21,50	24,5	1 370	0,656
LRM 28x10	*		60	56	23,450	23,0	25,948	25,50	28,5	1 895	1,150
LRM 30x12	*		60	60	24,500	24,0	27,504	27,00	31,0	2 178	1,140
LRM 32x12	*		60	64	26,500	26,0	29,504	29,00	33,0	2 495	1,177
LRM 36x12	*		75	72	30,500	30,0	33,504	33,00	37,0	3 194	2,189
LRM 40x14	*		80	80	33,700	33,0	37,004	36,45	41,0	3 984	2,725

Vis trapézoïdales