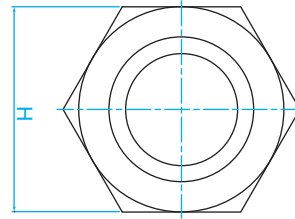
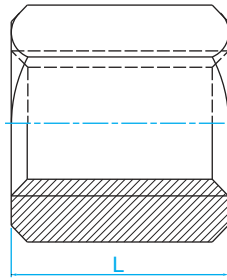
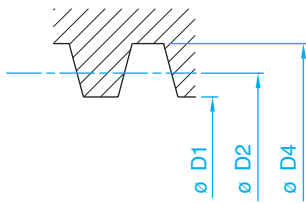


Type SKM



Trapézoïdal suivant ISO 2901/2903 et DIN103

Ecrou - Acier 11SMnPb37 (1.0737) / 11SMn37 (1.0736) - tolérance 7H

Référence Type	Pas - Hand		Dimensions - mm		Taraudage tolérance 7H - mm					Surface de contact Contact surface	Poids Weight
	Droite Right	Gauche Left	H sur plat ???	L	D1		D2		D4		
					maxi	mini	maxi	mini	mini	mm / 300 mm	Kg/ M
SKM 8X1,5	*		15	12	6,690	6,5	7,474	7,25	8,3	100	0,014
SKM 10X2	*	*	17	15	8,236	8,0	9,250	9,00	10,5	169	0,022
SKM 10X3	*	*	17	15	7,315	7,0	8,800	8,50	10,5	165	0,022
SKM 12X3	*	*	19	18	9,315	9,0	10,800	10,50	12,5	244	0,032
SKM 14X3	*	*	22	21	11,315	11,0	12,800	12,50	14,5	338	0,049
SKM 14X4	*	*	22	21	10,375	10,0	12,355	12,00	14,5	330	0,046
SKM 16X4	*	*	24	24	12,375	12,0	14,355	14,00	16,5	440	0,065
SKM 18X4	*	*	27	27	14,375	14,0	16,355	16,00	18,5	566	0,091
SKM 20X4	*	*	30	30	16,375	16,0	18,355	18,00	20,5	707	0,124
SKM 22X5	*	*	30	33	17,450	17,0	19,900	19,50	22,5	885	0,125
SKM 24x5	*	*	36	36	19,450	19,0	21,900	21,50	24,5	1 028	0,219
SKM 26x5	*	*	36	39	21,450	21,0	23,900	23,50	26,5	1 216	0,216
SKM 28x5	*	*	41	42	23,450	23,0	25,900	25,50	28,5	1 421	0,318
SKM 30x6	*	*	46	45	24,500	24,0	27,450	27,00	31,0	1 634	0,445
SKM 32x6	*	*	50	48	26,500	26,0	29,450	29,00	33,0	1 871	0,567
SKM 36x6	*	*	55	54	30,500	30,0	33,450	33,00	37,0	2 395	0,708
SKM 40x7	*	*	60	60	33,700	33,0	36,950	36,50	41,0	2 988	0,893
SKM 44x7	*	*	65	66	37,700	37,0	40,950	40,50	45,0	3 647	1,538
SKM 50x8	*	*	75	75	42,630	42,0	46,530	46,00	51,0	4 696	1,889
SKM 60x9	*	*	90	90	51,630	51,0	56,030	55,50	61,0	6 840	3,277
DOUBLE FILETS											
SKM 10X4	*		17	15	8,236	8,0	9,280	9,00	10,5	168	0,022
SKM 12X6	*		19	18	9,315	9,0	10,836	10,50	12,5	244	0,032
SKM 14X6	*		22	21	11,315	11,0	12,836	12,50	14,5	338	0,049
SKM 16X8	*		24	24	12,375	12,0	14,398	14,00	14,5	440	0,065
SKM 18X8	*		27	27	14,375	14,0	16,398	16,00	18,5	560	0,091
SKM 20X8	*		30	30	16,375	16,0	18,398	18,00	20,5	707	0,124
SKM 22X10	*		30	33	17,450	17,0	19,948	19,50	22,5	885	0,125
SKM 24x10	*		36	36	19,450	19,0	21,948	21,50	24,5	1 028	0,219
SKM 28x10	*		41	42	23,450	23,0	25,948	25,50	28,5	1 421	0,318
SKM 30x12	*		46	45	24,500	24,0	27,504	27,00	31,0	1 634	0,445
SKM 32x12	*		50	48	26,500	26,0	29,504	29,00	33,0	1 871	0,567
SKM 36x12	*		55	54	30,500	30,0	33,504	33,00	37,0	2 395	0,708
SKM 40x14	*		60	60	33,700	33,0	37,004	36,50	41,0	2 988	0,893

Vis trapézoïdales